



KARAJA  
ITALY



*lips*

## ROUGE MAT

*Matt lipstick*

**REF. 18** - 4 colours



Four new colors of Rouge Mat in an even more performing formulation that offers unusual results of lightness and compactness. Lipsticks with the extraordinary softness characteristics of a powder product, without however drying the lips.



138 142 143 144



## SUNSHINE SPF 30

*High protection lipstick uva + uvb*

**REF. 75** - 5 colours



Lightweight and enveloping, it is enriched with Shea Butter with revitalising and nourishing properties for lips that are always soft, smooth and protected. Contains Rosehip Oil and Macadamia Esters.



1 2 3 4 5

## BUTTERFLY

Super longwear waterproof  
silky effect - REF. 70 - 9 colours

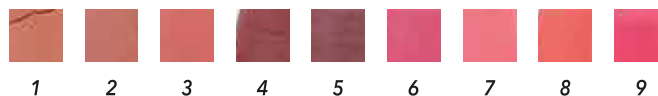


Delicately creamy, this amazing matt lipstick in a jumbo twist format glides over the lips as lightly as silk. Can be applied in a single stroke, fast and light as the flutter of butterfly's wings.

### INSTRUCTIONS

To be worn alone or on top of another lipstick to emphasize the lip volume with a contouring effect. Can be used as a base under another lip product for a long lasting look.

The waterproof and long lasting formulation does not smudge or dry out the lips.



## TWIST ME UP

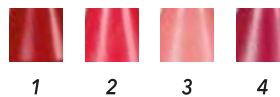
Soft-matt lipstick with smoothing blurring effect  
REF. 68 - 4 colours



An extraordinarily creamy and comfortable Jumbo twist lipstick. Contains powders with soft-focus action that optically smooth the lips, giving an even-looking and consistent result.

Enriched with agents\* containing moisturising and nourishing properties, it coats the lips giving an intense, soft-matt colour and a sensation of wellbeing that lasts a long time.

\*Contains Mimosa Wax, Vitamin E, Sunflower Wax, Jojoba Wax and Shea Butter.



## LUXURY LIP PENCIL

*Creamy lip pencil - REF. 66*  
2 colours



The full and intense colour is ideal for drawing a lip contour which can be delicately blended inwards.  
Dermatologically tested.



## K-PERFECT LIP LINER

*Extra Soft Lip Liner - REF. 78*  
7 colours



### DETAILS

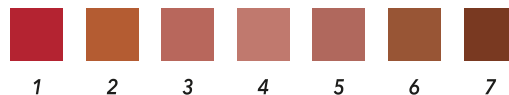
Very writing and resistant lip pencil with soft texture suitable for blending or used to define the lip contour in a precise way.

### FEATURES

Rich and intense line, excellent coverage and smoothness.  
The formula is highly pigmented, silky and velvety.

### USE

Can be used alone or with your favourite lipstick for a long-lasting lip color.



# K-INTENSIVE MATTE

Matt liquid lipstick  
REF. 79 - 9 colours



## DETAILS

Extra light liquid lipstick with a unique Matte effect.

Total and instant coverage declined in 9 shades, essential and rich in pigments.

Extra fluid texture that gives the lips a superlative color, a light and imperceptible long-lasting film.

## FEATURES

Instant coverage for extraordinarily flawless lips.

The velvety matte effect has been studied with a totally spherical powder that gives comfort and allows you to wear the product throughout the day.

Extra thin film. Matte finish without smudging.

## COMPOSITION

The perfect synergy between creamy esters and polymers makes the application of this product homogeneous and uniform.

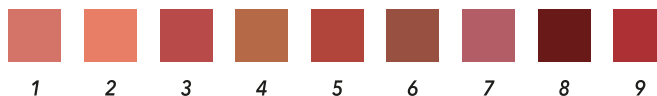
The structure of this Liquid Lipstick is truly unique, in fact the polymers contained are able to follow the movements of the lips ensuring an optimal hold.

Contains Sunflower Seed Wax (Helianthus Annuus Seed Cera (Helianthus Annuus (Sunflower) Seed Wax), known for its nourishing properties that help prevent dehydration.

Immediate pay-off thanks to a full and intense color.

## USE

Apply to the lips. Wait a few seconds to allow the correct fixing of the color.



## SCULPTING TOP COAT

Contouring & ombre  
effect lip gloss  
REF. 69



An extremely sensory top coat to emphasize volume with a sculpting effect for ombre lips.

Enriched with Camelina Oil and Olus Oil with nourishing, emollient properties, it melts deliciously onto the lips, enhancing them.



1

## STROBING TOP COAT

Ultra reflex  
lip highlighter  
REF. 74  
2 colours



**Lip highlighter with a strobing effect.**

Lip top coat infused with ultra reflex pearls to emphasize volume with a shimmering and radiant effect.

Apply alone or on top of lipstick to enhance the underlying colour with a desirable glow.

The lightweight and creamy formula blends deliciously onto your lips, giving extreme shine without weighing them down.



1

2

## CONTOUR & STROBE LIP PALETTE

Contouring & strobing palette  
REF. 72



A small palette containing infinite possibilities of shades to create multidimensional looks and innovative colours. Silky and melting powders with a "lurex" effect on the lips to create light effects and sculpt the shape.  
An explosion of metallic colours, perfect for highlighting matt and shiny lipsticks and defining the lip contour.

1



A gel enriched with highlighting flecks, like a real cascade of glitter, dispersed in an extremely sensory poured formula.

Sculpt & Contour

Shimmering  
Strobing Look

## ULTRA-RICH LIP BUTTER

Ultra-rich butter - REF. 58



### EXTREME PROTECTION FOR VERY DRY LIPS

A rich and creamy formula that nourishes deeply, bringing instant relief to chapped skin. Gives lasting softness and sweetness, delicately smoothes the lips thanks to the **Wild Mango Butter** and **Shea Butter** which combat roughness and chapping for a mouth that is divinely soft and plump, as if regenerated.



## ONE-TOUCH HOLO

*Illuminating lipstick  
with a strobing effect*  
**REF. 71**



Soft, creamy and sensory, it blends on the lips, enveloping them in radiance.

Perfect alone or on top of lipstick to embellish the underlying colour with a shimmering glow. Very easy and quick to apply, just one touch to instantly transform your look!

Dermatologically tested.



1

## FLASHLIGHT

*Lip & eye sparkling topper - REF. 73*



Highlighting top coat for eyes and lips.

An explosion of shimmering glitter to create multidimensional looks and innovative shades.

Perfect for highlighting matt eyeshadows and lipsticks, it can also be used alone.

Its melting and silky formula adheres perfectly to your skin without fallout.



1



*eyes*

## COAL BLACK KAJAL

Eye pencil - REF. 326



The result of the very latest in scientific research, this coal-black kohl is unbelievably light and goes on with the lightest touch. For full, lasting cover.

Its special ingredients help brighten your eyes.

**Ideal for lining the inner eye rim.** Smooth and creamy formula.

Ophthalmologically and dermatologically tested.



1

## SMOKY KAJAL

Smoky effect kajal + eyeliner

12h non-stop - REF. 371



### WATERPROOF DOES NOT BLEED

A velvety pencil offering incredibly intense colour and high performance, ideal for "smoky" eye makeup. Extremely soft to apply, it can be quickly blended in to get an extremely long lasting look.

Ophthalmologically and dermatologically tested.

Close cap well after use.



1

## SUPER LONGWEAR SOFT EYELINER

10h long lasting eyeliner - REF. 346



Long lasting, waterproof and no transfer eyeliner.

Easy to apply and blend, delivers **excellent coverage** and **professional results**.

Contains **Vitamin E + C + Jojoba Oil** with softening and antioxidant properties that ensure maximum protection for the delicate skin of the eyelids. Close cap well after use.

Ophthalmologically and dermatologically tested.



1

## PERFECT EYELINER

Eye pencil - REF. 342



Ultra soft wooden eye pencil, with applicator.  
Due to innovative technology, it has a soft texture, contains intense pigments and is extraordinarily smooth to apply.  
Its special formula makes for decisively **optimum coverage**, exceptional comfort and soft and easy application.  
Dermatologically tested.



6

## CAT EYES

Jumbo eyeshadow pencil - kohl - eyeliner  
super longwear 11h - waterproof  
super soft & multi-use - REF. 396



### A SOFT, MELTING MULTI-PURPOSE JUMBO PENCIL!

Extremely rich in pigment, it defines and highlights eye contours in an instant like a **WATERPROOF EYELINER**, conferring intense colour, excellent coverage and high definition.

Thanks to its instant colour release, it enhances the inner lash line of the eyes like **KOHL**.

It glides delicately over the eyelids like silk and can be blended in an instant like long lasting **EYESHADOW**.

It is easily blended immediately after application.

Close cap tightly after use. Ophthalmologically and dermatologically tested.



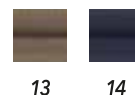
9

## CELEBRITY

14h eye pencil no transfer -waterproof  
REF. 376 - 2 colours



Thanks to its outstandingly soft creamy formula, this eye pencil glides over the eyelids just like a liquid eyeliner. Blends imperceptibly into the skin. Lets you smudge it gently before it fixes for lasting results. Close cap well after use. Ophthalmologically tested.



## K-TRILOGIQUE

Waterproof eye pencil  
REF. 711 - 4 colours



K-Trilogique, the new line of eye pencils represents the perfect compromise between innovative formulation and sustainability.

### 3 EFFECTS IN 1

**Eyeliner** for a perfect and defined line.

**Waterproof** to guarantee a long-lasting effect and a water-resistant makeup.

**Smokey** for an easy blending with a smokey eye effect.

K-Trilogique line was created to satisfy the desires of an increasingly demanding public, looking for extreme cosmetic performance, making these new pencils "top of the range".

They are a must for the most demanding make-up artists as well as for a classic clientele looking for high performance and at the same time aiming for a sustainable ethical approach.

The PEFC (Forest Certification Approval Program) guarantees the origins of wood extracted from sustainably managed forests.

The new raw materials used, both vegan and without palm oil, create an extremely versatile product.



## K-PERFECT EYELINER

*Eye pencil - eyeliner - waterproof*

**REF. 714**



Very soft wooden eye pencil in a new super performing color. The waterproof formula is characterized by excellent coverage, exceptional comfort, easy and soft application. Multifunction: Can also be used as a Kajal.



2

## BLACK IN A FLASH

*Spectacular black mascara - amazing visual effects: instant volume professional curling - extension - definition -* **REF. 374**



A Hi-Tech formula to improve the look of your lashes: high definition and the visual effect of extreme volume and separation in just one sweep. Quick, easy and smooth to apply for perfect results. The synergic action between the elastic waxes, special fast-drying filming agents and a custom curved wand provides immediate professional re-styling to shape your lashes at will immediately after application. Ophthalmologically tested.



1

## LASH LIFT EXPRESS

*Instant volume  
and perfect curve  
visual effect mascara*  
**REF. 338**



Designed to visually thicken your lashes and to accentuate their natural curve, this mascara gives you an intense, deep look all day long.

Its formula consists of carefully selected ingredients, combining waxes and polymers with a visual **volumising and curving effect** with active ingredients rich in peptides and oligosaccharides with protective properties.

Contains Vitamin E with antioxidant properties.

Ophthalmologically tested.



1

## ZERO GRAVITY

*Lift mascara*  
**REF. 701**



Defines, volumises and lifts eyelashes upwards, for a Zero Gravity effect!

Thanks to an exclusive, flexible and arched applicator, captures eyelashes from root to tip, fanning them out for a surprising result!

**Contains Diamond Powder, with an energising effect, and Argan Oil with nourishing and regenerating properties, for lashes that are always pampered and perfect.**

Ophthalmologically tested.



1

## LASH MASTER

Volumising & defining effect mascara  
REF. 377



### 3-IN-1 MASCARA FOR MULTIPLE DIFFERENT LOOKS

USE 1 VOLUMISING EFFECT

USE 2 DEFINING EFFECTE

USE 1+ 2 PROFESSIONAL RESULTS

**Dare to create a new look with lash master mascara and experiment with application techniques.**

Contains Keratin, Panthenol and Vitamin E.

Ophthalmologically tested.

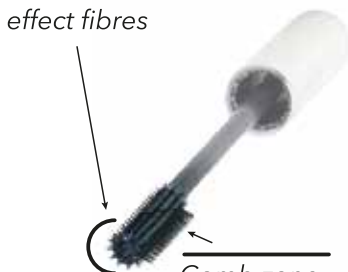


1

## LASH DESIGN MASCARA

Visible effect mascara  
extreme length for defined  
and sculpted lashes  
REF. 352

Zone with  
voluminous  
effect fibres



Comb zone  
to sculpt eyelashes



Gives lashes a **magnificent and immediate visible lengthening effect** thanks to its innovative applicator that improves lash extension and separation.

The soft, creamy formula with a visible volumizing effect glides gently over your lashes.

A nourishing complex based on **Sweet Almond Extract** and **Provitamin B5** helps moisturize and protect them.

Dermatologically tested.

**Variable geometry applicator for a panoramic effect.**



1



## ALL NIGHT LONG

*Pencil eyeliner - no transfer  
waterproof - no running - 18h - REF. 702*



Its ultra-intense formula and extremely soft tip enable a precise and even contour, right from the first stroke.  
No-run and instant set colour!  
For optimal use do not use with pen tip facing upwards.  
Ophthalmologically and dermatologically tested.



1

## JET BLACK

*Pen-style eyeliner - easy, intense strokes  
no transfer - water-resistant - super longwear 14h - REF. 369*



An eyeliner offering **graphic precision** when drawing the eye contour, with a comfortable precise tip for **easy, fast strokes. Intense black, high coverage, long lasting and smudge-proof.**  
Avoid holding the tip of the brush upright to get the best results.  
Ophthalmologically and dermatologically tested.



1

## NIGHT & DAY EYELINER

Eyeliners 24h

REF. 709



Its black, pigment-rich colour is intense and bold.

Creating a perfect line has never been easier: the calligraphy applicator allows you to draw an ultra-thin and defined line for a seductive and sophisticated result, while the ergonomic handle makes hand movements easier. It does not create smudges.

And with the **thermosensitive technology**, you can remove your makeup by simply cleansing with plenty of warm water: no more "panda effect" under your eyes!

Shake before use.



1

## TOPLINER

Matt eyeliner

no transfer

water-resistant

super longwear 12h

REF. 311



Easy and practical for drawing the outline of the eye using the brush dipped into the liquid and for thickening the eyelashes. Long lasting, no smearing.

**PROPERTIES** Intense colour, matt, good coverage and long lasting.

**MAKEUP HINTS** The special brush lets you draw a particularly thin line that blends in with the lashes to make these appear thicker.

Shake well before use.

Ophthalmologically and dermatologically tested.

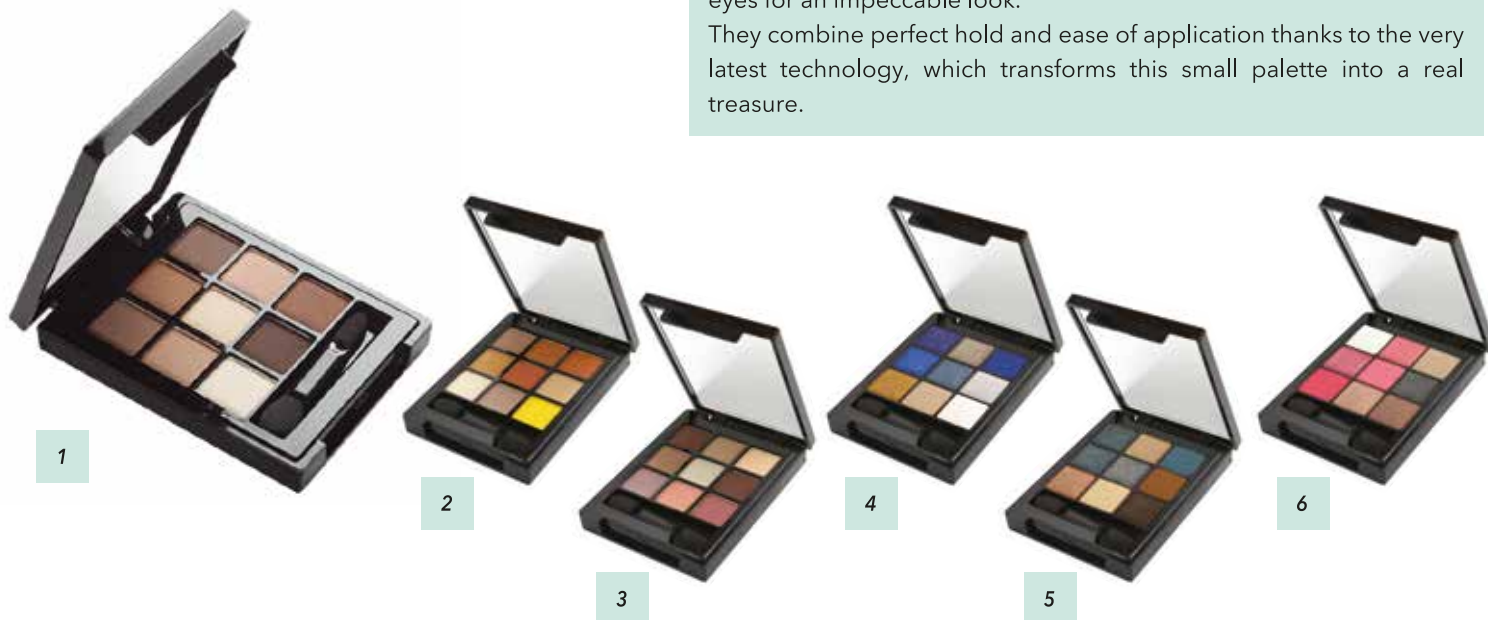


1

## WONDER SCULPT

Palette of 9 eyeshadows - spectacular makeup

REF. 393 - 6 colours



These eyeshadows have a really smooth matt texture to enhance your eyes for an impeccable look.

They combine perfect hold and ease of application thanks to the very latest technology, which transforms this small palette into a real treasure.

## AQUACOLOR

Wet & dry watercolour eyeshadow

REF. 336



Watercolour eyeshadow with a satin sheen.

Can be used dry for a luminous, semi-transparent look or wet, using a damp brush, to intensify the iridescent effect and get longer-lasting coverage.



35



*eyebrows*

## K-MICRO BROWLINER

*Micro eyebrow pencil - waterproof - no transfer  
long lasting*  
**REF. 713 - 2 colours**



Fine and extremely precise, it lines, defines and fills eyebrows for a truly natural effect in just a few quick strokes.

Waterproof formula, resists even hot, humid weather, it is long lasting and doesn't smudge. No need to sharpen the tip.

Contains Vitamins E + C.

Dermatologically tested.



2 3

## EYEBROW PENCIL

*Eyebrow pencil*  
**REF. 329 - 3 colours**



A dry, heat-resistant pencil. Once applied, can be softened with its brush to enhance your eyebrows.

A special formula for gentle shaping and natural filling of the eyebrow.

Dermatologically tested.



2 4 5

## NO TRACE

*Powdery brow pencil*  
**REF. 706**



Perfect for blending without leaving a trace, this powdery touch pencil is ideal for filling, lengthening and modelling eyebrows.

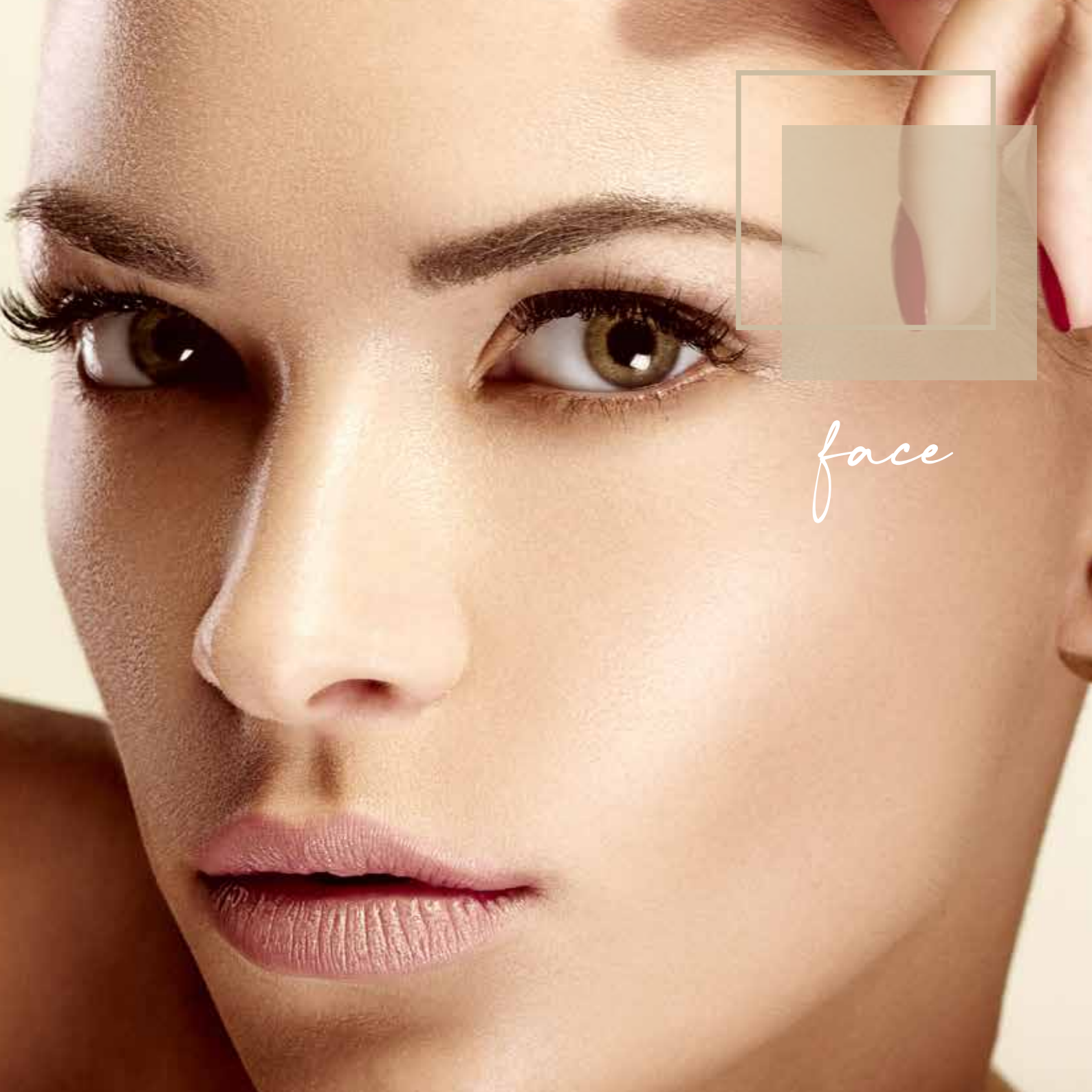
For a natural and clean look that is never artificial.

Its extremely thin and delicate matt formula blends as effortlessly as silk.

Dermatologically tested.



1



*face*

## CONTOUR QUAD

Face contouring palette - nude effect  
**REF. 466**



Softens facial contours and revives your complexion, for a luminous and natural look.



20

## GOLD & BRONZE

Face powder with a brightening  
and/or bronzing effect - **REF. 427** - 4 colours



An ultra-light texture is a leading feature of these powders with their extraordinary luminosity. Matt or pearl, they blend perfectly into the skin thanks to the use of carefully selected, fine pigments that alter reflected light to get a uniform result, without blotches.



34

35

36

37

## K-LIGHT

Face brightening  
REF. 468



The perfect key to capture the light and illuminate the particularities of every woman's face. A perfect ally to embellish all looks, a veil of powder that illuminates the face in a refined way. Its formula melts and glides on the skin like a precious cuddle that gives a three-dimensional light and a radiant complexion. Versatile product that can be used alone to illuminate the complexion and create a unique play of light, or combined with other products to sculpt the face.

1

## K-CHEEKS

Blush  
REF. 469 - 2 colours



Compact blush, easy to blend and with excellent adhesion to the skin. It will give to the cheeks a very natural "bonne-mine" look without weighing them down.

The characteristic Matt effect is given by its special and extremely thin texture that lightly revives the cheeks, providing multiple intensities of color and perfect uniformity in application.



1

2



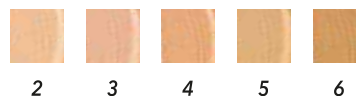
## DIVINE COVER

Waterproof foundation  
REF. 465 - 5 colours



The secret for perfect skin: DIVINE COVER  
A foundation for divine and immediate coverage.  
Enriched with hydrating and nourishing agents, it glides softly over skin thanks to its rich and creamy consistency, for uniform and radiant complexion, absolutely perfect for every occasion.  
Formulated for high waterproof coverage, confers all day luminosity, without a mask effect.  
Easy and quick to apply.

**Contains Macadamia Oil, Vit. E, Sweet Almond Oil, Pectin.**  
Dermatologically tested.



2 3 4 5 6

## K-BB WHITE

Skin tone perfector  
REF. 452 - 2 colours



The magic of a White Cream that only reveals its secret in contact with the skin: an extraordinary colour, released by microencapsulated pigments, which perfectly blends with the complexion of the face, enhancing and perfecting skin tone for a fresh, luminous, matt effect.  
The gentle, pleasant formula offers a very light veil of colour that is easy to apply.

Contains a precious active ingredient derived from Brown Algae from Brittany, a true Energy Booster that helps to stimulate the skin's vitality, promoting the natural synthesis of Collagen, Elastin and Hyaluronic Acid.

**Result: a natural, uniform complexion, firmness and tone.**

Suitable for all skin types.

Dermatologically tested.



1 2

# SKIN VELVET

*Velvety foundation  
instant radiance - longwear*  
**REF. 431 - 8 colours**



## NATURAL RADIANT COLOUR

Its delicate creamy consistency offering medium/high coverage and easy blending in creates a visibly perfect complexion. Brightens, tones and perfects tired, dull and lifeless skin in just one stroke.

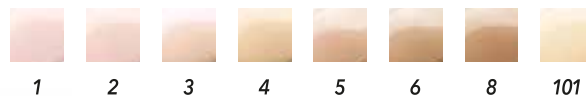
In just one product, Skin Velvet combines the perfect coverage and velvety smoothness of a rich creamy texture with natural radiant end results.

Thanks to its innovative formula based on fine waxes and coated pigments, it slides over the skin creating a super soft film that instantly blends into and brightens the skin.

## COMFORTABLE AND LONGWEARING

A velvety brightening cream that caresses your skin and offers unparalleled comfort. For a perfect, natural and radiant complexion all day long. For normal to dry skin types.

Dermatologically tested.



# PHOTO FINISH

Fluid foundation  
radiant matt effect  
oil-free - long lasting  
**REF. 438** - 9 colours



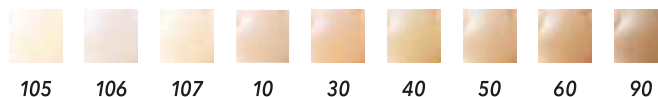
Brightens the face without shine.  
Guaranteed impeccable, **natural MATT smoothing effect**.  
**Great coverage without heaviness**.  
For all skin types. Especially suited for mixed/oily skins.

## PHOTOGRAPHIC PERFECTION

Special coated pigments diffuse **extraordinary radiance**, enhancing the splendour and freshness of your complexion.  
Wrinkles, pores and blemishes are concealed and reduced for a natural, radiant look and a delicate perfect final **"MATT"** effect.

## LONG LASTING EFFECT AND COMFORT

Its **ultra elastic formula** makes for easy and silky smooth application.  
Embraces the skin **without stiffening lines** and produces a reassuring **sense of comfort** all day long.  
Shake well before use.



# UNICAKE

*Oil-free silky powder foundation  
radiant, matt finish  
versatile  
adjustable coverage*  
**REF. 425 - 8 colours**



Intangible and silky, it immediately blends in, like a **second smooth and perfect skin**.

Visibly evens out the complexion and **produces a matt, natural look**. Microscopic light-reflecting pigments give a radiant glow.

## **OIL-FREE FOUNDATION**

Easy to apply with a slightly moistened sponge. Conceals imperfections and leaves an even, flawless appearance from morning to night.

This compact and even foundation does not need an extra layer of face powder, as its **special oil-free formula is rich in mineral emollients** and leaves a fine, adherent, velvety and long lasting layer.

## **POWDER WITH A MATT ILLUMINATING TANNING EFFECT**

Applied over a basic emulsion or as a first layer with a large brush.

**For a flawless and radiant complexion.**

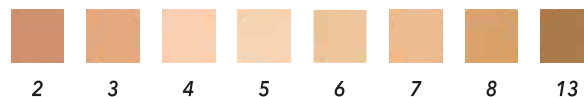
## **FACE POWDER WITH A SMOOTHING EFFECT**

Apply after foundation or directly to the skin using its dry sponge or a brush to get a matt complexion and **visibly minimise the pores**.

Its fine texture is extremely soft and comfortable on the skin.

Useful for touch-ups during the day and especially on the T-zone **for an instant matt finish**.

**For normal or oily skin.**



# PLAISIR

Silky loose powder  
REF. 433



## FOR A PEACHY COMPLEXION

Unbelievably fine powder that glides across your skin like silk, blending in with your natural colour without streaking for a **natural flawless finish**. Available in matt and pearl versions.

Dermatologically tested.

## MATT - 1

Absorbs and reduces excessive shine, improving makeup hold. Its gentle consistency has the visual effect of **brightening and smoothing** your complexion, at the same time enhancing your natural colour.

For all skin types.



1



## K-SOFT CONCEALER

Liquid concealer

REF. 470 - 3 colours



Medium coverage concealer for a natural and silky finish, perfect as an everyday ally.

Blendable texture that allows aesthetic performance with immediately visible results.

Minimizes facial imperfections and covers blemishes for a "forever-young" result from the first application.



## MAKEUP FIXER

Fixer spray

REF. 434



This spray fixes your makeup to ensure lasting effects without smudging. Provides protection against all agents likely to ruin your makeup.

A fine mist instantly coats your face with a fine, invisible and comfortable elastic film.

Contains **Chamomile and Marigold Extracts with soothing properties.**

### INSTRUCTIONS FOR USE

Spray on face at a distance of around 20 cm with eyes closed and leave to dry completely.

Does not contain propellant gases. Keep out of the reach of children. For external use only.

Do not spray on naked flames.

# K-WISH SET

REF. KE265



## K-WISH SCRUB

A concentrate of well-being that gives the lips a sensation of softness, creaminess and pleasantness in application and over time. Thanks to its particular composition, the lips will appear fresh, plump and shiny.

## K-WISH MASCARA

High performance mascara, gives the lashes immediate volume for a magnetic look. The creamy formula allows easy application and creates a uniform film on the lashes. Very intense black color.

## K-WISH LIPSTICK

Extremely comfortable application accompanied by a release of deep and compact color. The particular texture is able to increase the intensity and fullness of the product: the result is a vibrant and never flat color, maintaining the elegant matte finish.



*hands*



## NAIL PAINT ANTI-SHOCK SYSTEM

Professional nail paint  
with an anti-shock system  
REF. 510 - 3 colours

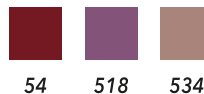


New generation formula for outstanding results: **shine, long lasting, really easy to apply.**

A flat professional brush gently follows the curve of the nail for excellent performance.

### USE

Apply the lacquer to dry clean nails.



## NAIL PAINT

Glossy nail lacquer  
REF. 504



25  
transparent





*palette*

# PALETTE



Palette Unicare 8 colours



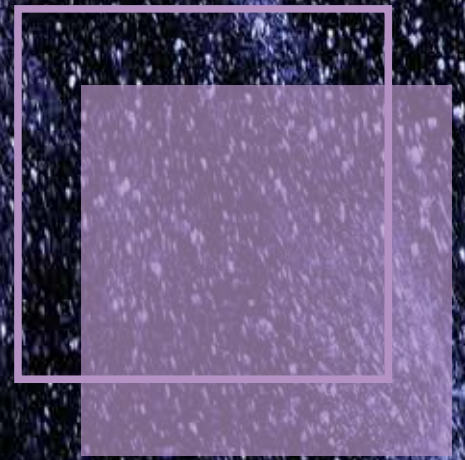
Eyes Silver Palette



Face Palette n.1



Face Palette n.2



*accessories*

## SCRUB & MASSAGE SPONGE

*For firmer and more luminous skin*



A very delicate silicone sponge to use preferably with oils and creams to massage and care for the skin tenderly.

Improves the performance of cleansers because it helps remove makeup, transforming skin cleansing into a true sensory experience.

## K-BLENDING SPONGE



Sponge designed for applying and blending face makeup, for a soft, radiant and perfectly homogeneous complexion.

It helps to cover imperfections, allowing you to softly blend make-up even in the corners and in the smallest and most difficult areas to reach.

## LATEX SPONGE



## SHARPENER



*Pointed Tip Sharpener*

*Double Pencil Sharpener*

## EYELASH CURLER



## K-PROFESSIONAL BRUSH SET



## BRUSHES CAN BE BOUGHT SEPARATELY



2 - Lip brush w/brass case



5 - Eyeshadow small size



6 - Eyeshadow medium size



7 - Eyeshadow big size



8 - Smudger



9 - Foam applicator changeable



10 - Eyebrow comb



14 - Powder brush



15 - Foundation brush



18 - Perfector brush



19 - Sculpting brush



20 - Liquid & powder foundation brush



Kabuki brush



Brow blender



22 - Lash & brow brush



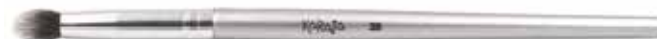
25 - Blurring brush



26 - Slanted blending brush



27 - Round blending brush



28 - Small fluffy brush



Lip & Eyes



Smokey 3D brush

# WONDER BROW STENCIL KIT

Brow stencil kit



## CONTAINS 10 STENCILS FOR 5 DIFFERENT LOOKS

Find out how to make the most of your eyebrow shape, with our stencil kit. Perfect for flawlessly drawing, shaping and defining the brows.

Made of durable plastic, the stencils are easy to clean and designed to last over time.

**Natural:** for medium-width brows

**Seductive:** for brows with a well-defined arch

**Dramatic:** for a more curved and defined arch

**Thin:** for thin brows

**Diva:** for a rounded arch



## SOFT MAKEUP BAG 2

37x18x27 cm



## WORKSTATION

64x45x141 cm



## MAKEUP CHAIR

56x53x110 cm



## ROLL UP

80x200 cm



# DISPLAY



25x25 cm



25x25 cm



25x25 cm



25x25 cm



25x25 cm



27x21 cm



14x7 cm



## K-SIX DISPLAY

149 x 54.50 x 66.50 cm



Modular display, with an elegant black structure and made up of 6 interchangeable modules.

Thanks to the possibility of combining all modules with extreme ease, each individual display is completely customizable.

The possibility of removing each single module in an extremely convenient and fast way facilitates the work of the make-up artist, allowing her to use it by moving it even in the workstation.



# K-DISPLAY

26x29 cm



*K-LIPS DISPLAY*



*K-EYES DISPLAY 1*



*K-EYES DISPLAY 2*



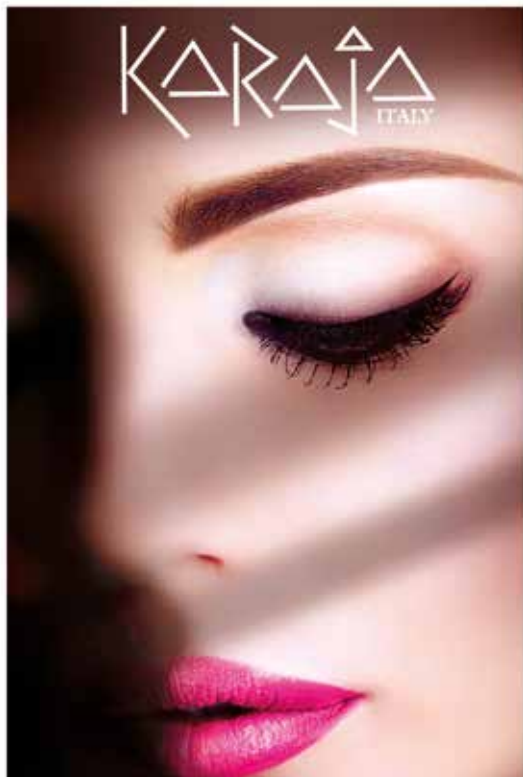
*K-FACE DISPLAY 1*



*K-FACE DISPLAY 2*

**POSTER**

40x60 cm



45



46



**KARAJA SRL**  
**ITALY**

Via Tavani, 1-24030 Mozzo (BG) ITALY  
Tel. +39 035.528538 - Fax +39 035.528518  
customercare@karaja.it  
www.karaja.it

